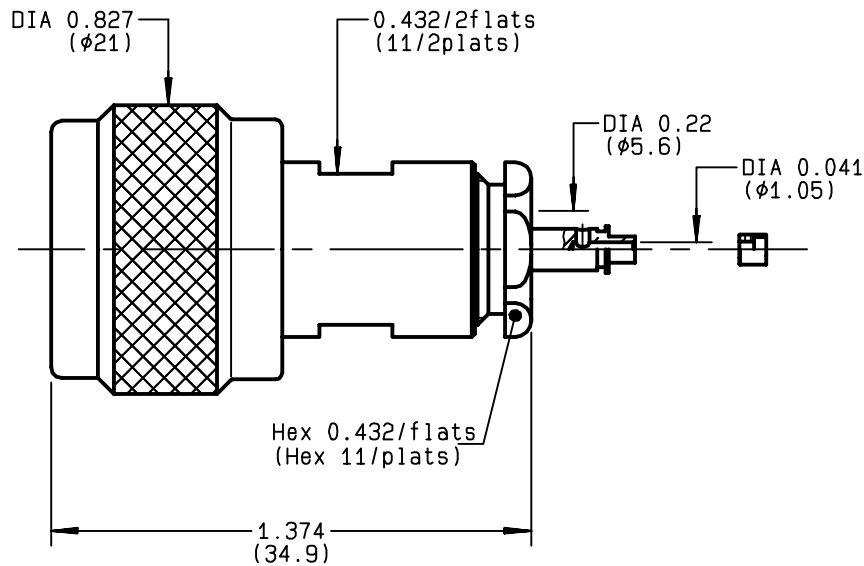


**STRAIGHT PLUG CLAMP TYPE  
CABLE 5/50 S+D**

**R161.010.050**  
**SERIES N**



NOMINAL IMPEDANCE	<b>50</b> Ω	CABLES : <b>KX 15</b> <b>KX 23</b> <b>RG 141</b> <b>RG 142</b> <b>RG 142 FTX</b> <b>RG 223</b> <b>RG 400</b> <b>RG 58</b>
FREQUENCY RANGE	<b>0-11</b> GHz	
TEMPERATURE RATING	<b>-55/+155</b> °C	
V.S.W.R	<b>1.30</b> + x F(GHz)Maxi	
RF INSERTION LOSS	<b>0.048</b> √F(GHz) dB Maxi	
VOLTAGE RATING	<b>850</b> Veff Maxi	
DIELECTRIC WITHSTANDING VOLTAGE	<b>1500</b> Veff Mini	
INSULATION RESISTANCE	<b>5000</b> MΩMini	
HERMETIC SEAL	<b>NA</b> Atm.cm <sup>3</sup> /s	
LEAKAGE (pressurized only)	<b>NA</b>	
MECHANICAL DURABILITY	<b>500</b> Cycles	OTHERS CHARACTERISTICS  CABLE RETENTION <b>150</b> N Mini CENTER CONTACT RETENTION Axial force - mating end <b>27</b> N Mini Axial force - opposite end <b>27</b> N Mini Torque <b>NA</b> cm.N Mini RECOMMENDED TORQUES Mating <b>130</b> cm.N Panel nut <b>NA</b> cm.N Clamp nut <b>450</b> cm.N
WEIGHT	<b>33.5</b> gr	
SPECIFICATION		

CONNECTOR PARTS	MATERIALS	FINISH (all values are given in micrometers)
BODY	BRASS	BLACK-CHROMIUM 0.2 OVER NICKEL 2
OUTER CONTACT	BRASS	BBR 2
CENTER CONTACT	BRASS	GOLD 0.5 OVER NICKEL 2
INSULATOR	PTFE	-
GASKET	SILICONE RUBBER	-
OTHERS PIECES	BRASS	BLACK-CHROMIUM 0.2 OVER NICKEL 2

ISSUE	CREATION DATE	FILE PART-NUMBER	 <b>RADIALL</b> ®
<b>9809F02</b>	<b>12/10/1993</b>	<b>EPC 96-07</b>	

BONMINI

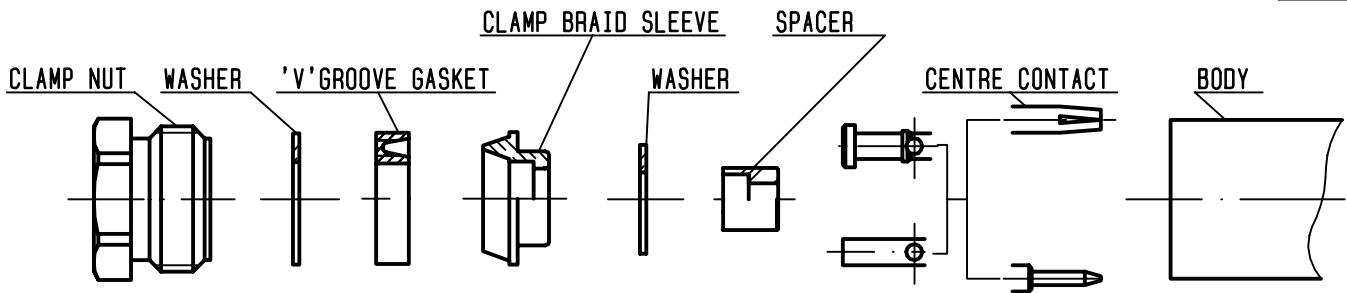
The information given here is subject to change without notice. Design changes may be in order to improve the product.

*Connect to the future*



**R161.010.050**

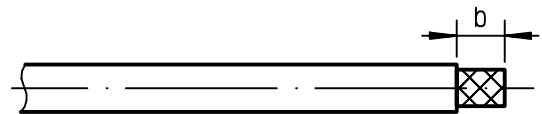
ISSUE 9809F02 SERIES N



①

Strip the cable .

-  
-  
-



Stripping	a	b	c	d	e
inch	0.157	0.295	0	0	0.079
mm	4	7.5			2

②

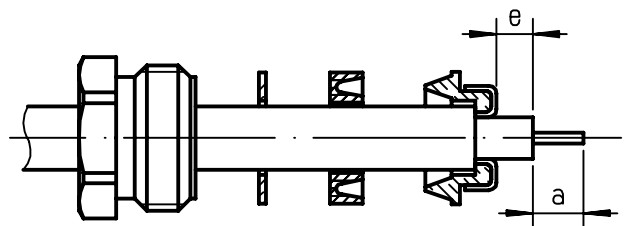
Slide the clamp nut , the washer and the 'V'groove gasket onto the cable .

Slide clamp braid sleeve over braid .

Fold back braid and trim off surplus braid .

Trim back dielectric as shown .

-

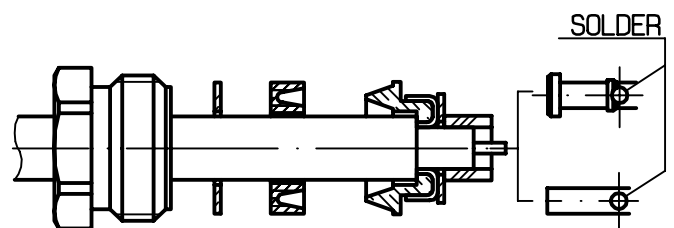


③

Slide the washer and the spacer onto the dielectric .

Solder the cable inner conductor into centre contact .

-  
-  
-

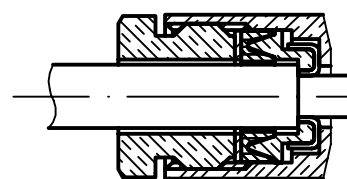


④

Screw sub-assembly into the connector body .

( recommended coupling torque 39.83 in.lb )

-  
-



Hex. : 0.433/flats